

### Specifications

Model	Z-80/60	
Measurements	Metric	US
Working height maximum*	25.77 m	84 ft
Platform height maximum	23.77 m	78 ft
Horizontal reach maximum	18.29 m	60 ft
Up and over clearance maximum	8.83 m	29 ft
Below ground reach	4.83 m	15 ft 10 in
<b>A</b> Platform length - 8 ft / 6 ft	0.91 m/0.76 m	3 ft/2 ft 6 in
<b>B</b> Platform width - 8 ft / 6 ft	2.44 m/1.83 m	8 ft/6 ft
<b>C</b> Height - stowed	3.00 m	9 ft 10 in
<b>D</b> Length - stowed	11.27 m	37 ft
<b>E</b> Length - transport	11.27 m	37 ft
<b>F</b> Width	2.49 m	8 ft 2 in
<b>G</b> Wheelbase	2.85 m	9 ft 4 in
<b>H</b> Ground clearance - center	0.30 m	12 in

### Productivity

Lift capacity	227 kg	500 lbs
Platform rotation	160°	160°
Vertical jib rotation	135°	135°
Turntable rotation	360° continuous	
Turntable tailswing - riser up	1.17 m	3 ft 10 in
Turntable tailswing - riser down	2.24 m	7 ft 4 in
Drive speed - stowed	4.83 km/h	3.0 mph
Drive speed - raised**	1.1 km/h	0.68 mph
Lift speed to full height	76 sec	76 sec
Gradeability - 4WD - stowed***	45%	45%
Turning radius - 2WS inside	4.42 m	14 ft 6 in
Turning radius - 2WS outside	7.47 m	24 ft 6 in
Turning radius - 4WS inside	2.13 m	7 ft
Turning radius - 4WS outside	4.57 m	15 ft
Controls	12 V DC proportional	
Tyres	18-625 NHS	

### Power

Power source	Deutz Stage IIIB TD2.9 L4 4 cylinder turbo diesel 55 kW (74 hp) Perkins Stage IIIB 404F-22T 4 cylinder turbo diesel 43 kW (58 hp) Deutz Stage IIIA TD 2011 L04i 4 cylinder turbo diesel 55 kW (74 hp) Perkins 804D-33 4 cylinder diesel 47 kW (63 hp)	
Auxiliary power unit	12 V DC	12 V DC
Hydraulic tank capacity	170 L	45 gal
Fuel tank capacity – diesel machines	132 L	35 gal
Fuel tank capacity – gas/LPG machines	114 L	30 gal

### Sound & Vibration Levels

Sound pressure level (ground workstation)	85 dBA	85 dBA
Sound pressure level (platform workstation)	74 dBA	74 dBA
Vibration	<2.5 m/s <sup>2</sup>	<8 ft 2 in/s <sup>2</sup>

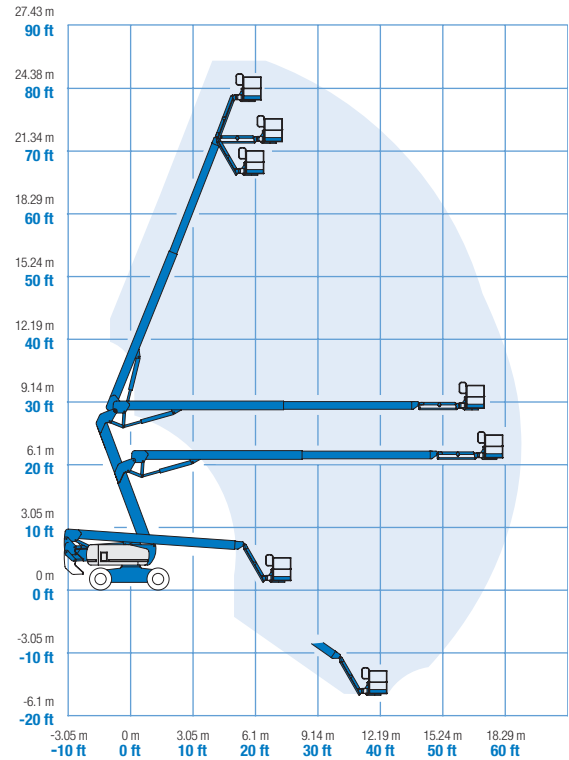
### Weight\*\*\*\*

CE 4WD/2WS	16,284 kg	35,900 lbs
CE 4WD/4WS	17,010 kg	37,500 lbs

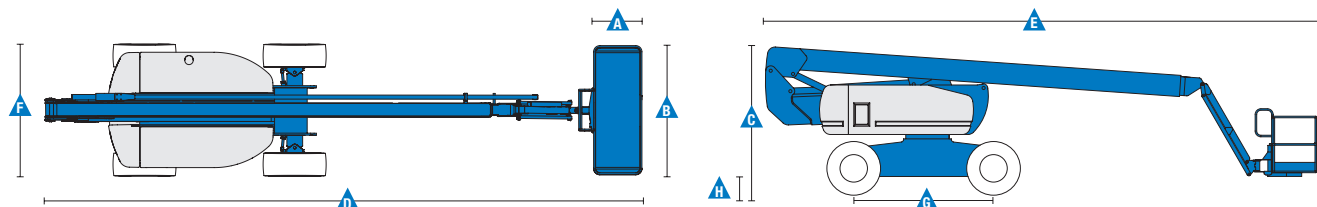
### Standards Compliance

EU Directives: 2006/42/EC - Machinery (harmonized standard EN280:2013); 2004/108/EC (EMC); 2000/14/EC (Outdoor Noise)

### Range Of Motion Z-80/60



\* The metric equivalent of working height adds 2 m to platform height. U.S. adds 6 ft to platform height.  
\*\* In lift mode (platform raised), the machine is designed to operate on firm, level surfaces only.  
\*\*\* Gradeability applies to driving on slopes. See operator's manual for details regarding slope ratings.  
\*\*\*\* Weight will vary depending on options and/or country standards.



### Features

Standard Features	Easily Configured To Meet Your Needs	Options & Accessories
-------------------	--------------------------------------	-----------------------

#### Measurements

- 25.77 m (84 ft) working height
- 18.29 m (60 ft) horizontal reach
- 8.83 m (29 ft) up and over clearance
- Up to 227 kg (500 lbs) lift capacity

#### Productivity

- 1.83 m (6 ft) jib with 135° range
- Self-levelling platform
- Hydraulic platform rotation
- Proportional joystick controls
- Telematics-Ready Connector
- Thumb rocker steering
- On board diagnostics
- Hydraulic oil cooler
- Drive enable
- AC power cord to platform
- Horn
- Hour meter
- Tilt alarm
- Descent & travel alarms
- Flashing beacon
- 360° continuous turntable rotation
- Locking turntable covers
- Full-time positive traction drive
- Two speed wheel motors
- Four steering modes: front, rear, crab and coordinated
- Configurable controls to limit lift height to 70 ft
- Certified load sensor

#### Power

- 12 V DC auxiliary power
- Anti-restart engine protection
- Auto engine fault shutdown
- Engine monitoring display
- Dual battery
- Engine status display
- Intake air heater (Deutz engine)

#### Platform Options

- Steel 2.44 m (8 ft) (standard)
- Steel 1.83 m (6 ft)
- 2.44 m (8 ft) tri-entry

#### Jib

- Articulating 1.83 m (6 ft) jib boom

#### Engine Options

- Deutz turbo diesel 55 kW (74 hp), Stage IIIB
- Perkins turbo diesel 43 kW (58 hp), Stage IIIB
- Deutz turbo diesel 55 kW (74 hp), Stage IIIA
- Perkins diesel 47 kW (63 hp)

#### Drive/Steer Options

- 4 x 4 (standard)
- 4 x 4 x 2 (standard)
- 4 x 4 x 4

#### Axle

- Active oscillation

#### Tyre Options

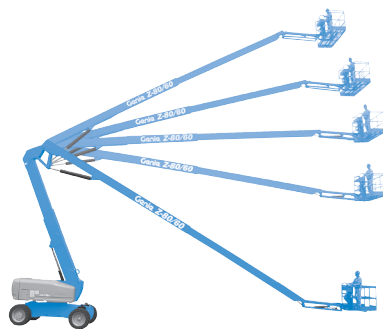
- Rough terrain foam-filled (standard)
- Rough terrain non-marking foam-filled

#### Productivity Options

- Platform top auxiliary rail
- Air line to platform
- Power to platform (incl. plug, socket and ground fault interrupt leakage on request)
- Work lights package (2 on chassis, 2 on platform)
- Dual axis joystick steering
- Biodegradable hydraulic oil <sup>(2)</sup>
- Aircraft protection kit <sup>(1,2)</sup>: platform foam padding and platform disable system
- Hostile environment kit <sup>(2)</sup>: cylinder bellows, boom wiper seals, platform and ground control box covers
- Deluxe hostile environment kit <sup>(1,2)</sup>: adds to basic kit center turntable shield, ring gear guard, tail pipe guard, engine cover flaps and air pre-cleaner
- Track & Trace <sup>(3)</sup> (GPS unit providing machine location & operating information)
- Lockable platform control box covers
- Operator Protective Structure
- Operator Protective Alarm
- Keypad unlocking device

#### Power Options

- AC generator packages (110V/60Hz - 220V/50Hz, 3000W) <sup>(2)</sup>
- Diesel air intake pre-cleaner <sup>(2)</sup>
- Diesel catalytic scrubber muffler <sup>(2)</sup> (Stage IIIA engine only)
- Low temperature cut-out module
- Engine heater option <sup>(1)</sup>
- Refinery kit with spark arrestor and electric or mechanical Chalwyn valve <sup>(1)</sup>
- Cold weather packages <sup>(2)</sup>



<sup>(1)</sup> Available on selected models only. See your Genie representative for further information.  
<sup>(2)</sup> Factory-fit option only  
<sup>(3)</sup> Includes a first 2 years subscription

### United Kingdom

The Maltings, Wharf Road, Grantham NG31 6BH, T: +44 800 988 3739 (toll free), Fax +44 (0)1476 584334, Email AWP-InfoEurope@terex.com  
 Visit [www.genielift.co.uk/locations](http://www.genielift.co.uk/locations) to view our global locations list.

### Worldwide Manufacturing And Distribution

Australia · Brazil · Caribbean · Central America · China · France · Germany · Italy · Japan · Korea · Mexico · Russia · Southeast Asia · Spain · Sweden · United Arab Emirates · United Kingdom · United States

Product specifications and prices are subject to change without notice or obligation. The photographs and/or drawings in this document are for illustrative purposes only. Refer to the appropriate Operator's Manual for instructions on the proper use of this equipment. Failure to follow the appropriate Operator's Manual when using our equipment or to otherwise act irresponsibly may result in serious injury or death. The only warranty applicable to our equipment is the standard written warranty applicable to the particular product and sale and we make no other warranty, express or implied. Products and services listed may be trademarks, service marks or trade names of Terex Corporation and/or their subsidiaries in the USA and many other countries. Genie is a registered trademark of Terex South Dakota, Inc. © 2016 Terex Corporation.

